

## Contents

Title	Author	Page
<b>Articles</b>		
Bob Newman and Sons Piano Tuners	Matt Newman	21
Dennis Millard Bequest	Andrew Trump	4
Elm Tree Cottage, Culgaith	Hilary Marsh	7
<b>Anglesey Abbey</b>	Issy Vetoshkina	14
<b>Bottisham and Burwell Photographic Club</b>	Daphne Hanson	6
<b>Burwell and Reach Car Scheme</b>	Pam King	18
<b>Burwell Museum</b>	Brenda Wilson	19
<b>Burwell Surgery Patient Participation Group</b>		15
<b>Bus Timetable</b>		27
<b>CentrePeace</b>		18
<b>Church</b>		
Church Services		27
Letter from the Vicarage	Eleanor Williams	17
<b>Contact Information</b>		28
<b>Diary Dates</b>		27
<b>Ely Food Bank</b>		18
<b>Food Focus</b>	Catherine Gibson	16
<b>Mobile Library</b>		3
<b>MP's Report</b>	Charlotte Cane	23
<b>Nature in Reach</b>	Nick Acklam	10
<b>Parish Council</b>		
Know your District Councillors		22
Know Your Parish Council		22
Meeting Minutes		24
<b>Reach Fair</b>	Alex de Giorgio-Miller	19
<b>Rosanna's Ramblings</b>	Rosanna Moseley Gore	8
<b>Sport and Recreation</b>		
Cricket Report	Ross Clark	5
Reach Riders	Sue Cameron	6
<b>Tales from a Reach Garden</b>	Danuta Gibson	20
<b>Then and Now</b>	Chris Patterson	28
<b>Village Hall</b>	Sue Elliott	4
<b>Village Update</b>	Alex de Giorgio-Miller	3
<b>Wicken Fen</b>	Ajay Tegala	13

---

## From the Editor

---

We'll start off with the politics. Firstly, congratulations go to Charlotte for her success in becoming our new MP – see her first report on page 23.

And all of a sudden, we have a virtually full complement of Parish Councillors which means we will be able to carry on looking after the best interests of our village without any outside help. Its very pleasing and an update on the make-up of the new council can be found on page 22.



We now have a date for our annual Coffee Morning, this time in support of the two cancer charities Macmillan and Maggie's. Its again going to take place in a home within the village, this time Gayle and Ollie's at 48 Great Lane. They're always fun events so please put the date in your diaries. The format will be as previously with hot drinks, bacon butties, cakes, plants and a raffle, plus the fun of Apple Day. The team will be needing help and we'll be keeping you informed over the coming few weeks.

**MACMILLAN  
CANCER SUPPORT**



**MAGGIE'S**

Everyone's home of cancer care

**COFFEE MORNING**

**Saturday 14<sup>th</sup> September**

**10am to midday**

**48 Great Lane**

I should highlight three village enterprises who have contributions in this issue. Piano tuner **Matt Newman** on page 21, **Hilary Marsh's** delightful Lake District holiday cottage on page 7 and **Thomasina's** Fabulous Flora on page 4 of the adverts section plus a picture of her work on the back cover.

And finally, Reach Fair's final accounts on page 19 show that the event was even more successful than the original estimate – well done to the Reach Fair team.

**David Parr**

---

## About the Magazine

---

The purpose of *Within Reach* is to serve the whole village by circulating information and interesting articles free to every household. Additional copies are available at a charge of £3.00. Issues are published bi-monthly covering the months of Feb/Mar, Apr/May, June/July, Aug/Sept, Oct/Nov and Dec/Jan.

Copies of *Within Reach* magazine and its predecessor *Out of Reach* can be found on the village website [www.reach-village.co.uk](http://www.reach-village.co.uk). This magazine (which is fully funded from advertising) is printed by Burwell Print Centre, an excellent social enterprise which trains and supports adults with learning disabilities and provides high quality design and print capabilities.

---

## The Team

---

<b>Editor</b>	David Parr
<b>Distribution</b>	Freda Lloyd, Claire Halpin-McDonald and Grahame Radford
<b>Photographer</b>	Rosanna Moseley Gore
<b>24Acres</b>	David Thomas
<b>Anglesey Abbey</b>	Issy Vetoshkina
<b>Church</b>	Eleanor Williams
<b>Cookery</b>	Catherine Gibson
<b>Cricket</b>	Ross Clark
<b>Events Team</b>	Debbie Quilter
<b>Gardening</b>	Danuta Gibson
<b>Neighbourhood Watch</b>	Kevin Evans
<b>Reach Riders Group</b>	Sue Cameron
<b>Rosanna's Ramblings</b>	Rosanna Moseley Gore
<b>Then and Now</b>	Chris Patterson
<b>Village Hall</b>	Sue Elliott
<b>Village Matters</b>	Alex de Giorgio-Miller
<b>Wicken Fen</b>	Ajay Tegala
<b>Wildlife</b>	Nick Acklam

---

## Village Update

---

Hurrah for the summer holidays! It felt a little like we were limping to the finish line a little but finally getting some sunny days helped us out at the end! Enjoy!



Fun and free Youth Fusion events will be taking place at Burwell and Haddenham recreation grounds this summer. The drop in events, which last year attracted hundreds of young people, are returning to the district due to popular demand. They provide a unique opportunity for anyone under the age of 18 to try their hand at sporting events and clubs operating locally and find out more about organisations offering support and advice.

There will be opportunities to scramble up a climbing wall, meet the fire service, try your hand at judo (Burwell only) or korfbal (Haddenham only) or have a workout at a mobile gym. A bike mechanic will be available to offer advice on bike maintenance and carry out basic repairs on the day free of charge and the police will be offering bike security marking. There will also be opportunities to meet support organisations and ask questions about topics you may want to know more about, such as mental health advice, careers opportunities, how to maintain a healthy weight and drugs and knife crime. The Youth Fusion days will be held between 11am and 3pm at Burwell Recreation Ground on 8<sup>th</sup> August and Haddenham Recreation Ground on 28<sup>th</sup> August.

### Summer reading challenge

Children can get crafty this summer by signing up to this year's Summer Reading Challenge. The theme of 'Marvellous Makers' aims to fire up children's imagination and unleash storytelling and creativity through the power of reading. The Challenge is free to take part in and is open to pre-school and primary school aged children of all reading abilities. Children can sign up at their local (or mobile) library. To complete the Challenge, they will need to read six library books of their choice during the holidays – this includes listening to audio books or being read to for young children not yet able to read independently.

Children have until Saturday 14 September to complete the Challenge. When they finish, they will receive a certificate and a medal, with a special sticker medal for children under 3. To celebrate this year's Summer Reading Challenge, creative and craft-based activities and events will be taking place across Cambridgeshire's libraries throughout the summer holidays. To find out what's happening at your nearest library go to <https://www.library.live/whats-on>

### Coffee pod recycling

At the end of June, all nine of the Cambridgeshire Household Recycling Centres introduced coffee pod recycling so we now have an environmentally friendly way to dispose of both aluminium and plastic coffee pods. Over 1 billion coffee pods are sold each year in the UK alone and waste from these will lead to a huge environmental impact if not recycled properly. The County Council has partnered with 'Podback' – collected pods are shredded and cleaned of coffee and then the shredded pods can be made into new products, while the coffee grounds are used to help create renewable energy and soil improver. Get recycling!

### Our bin lorries have names!

ECDC ran a competition to name a bin lorry and now the winning names have been added to the front of the cabs for residents to spot as they tour the district collecting waste and recycling. So, look out for:

- Binderella
- Bin Diesel
- Lady Gagarbage
- Lamborgreeny
- Lord of the Bins
- Loveheart!
- Optimus Grime
- Recyclosaurus Rex
- The Flying Dustman
- Wheelie Cathedral

Keep well and enjoy the sun!

Alex de Giorgio-Miller

---

## Mobile Library

---



The mobile library visits Reach on the 3<sup>rd</sup> Tuesday of the month from 10.10 to 10.30am. This is route F16 and it parks at the Fair Green Bus Stop. They have a great selection of books for all, free NHS hearing aid batteries and walking stick ferrules. You can join Cambridgeshire Libraries on the bus if you are not already a member.



---

## Village Hall

---



### VILLAGE HALL AGM 19 SEPTEMBER AT 8PM

It's the Village Hall AGM and another successful year in spite of the high running costs and the burglary of lead flashing last year. We have been fortunate with bookings and income increasing and are greatly indebted to Diana Greer who came forward to offer help with bookings which will become more automated and easier to book and pay online. Natasha Bridgeman who has now resigned as Bookings and Maintenance Secretary has been an absolute star, staying on longer until we found a replacement.

Our committee is now greatly depleted with the loss of Charlotte Cane and her well-deserved election as our MP and I am leaving Reach soon for Dorchester. Thanks to David Thomas and Andrew Trump who are heroically managing the full responsibility of decisions and actions with great support from Tony Fordham, we need more people to share the running of the VH. To comply with the Charity Commission, we must have a quorum committee to run the VH or cease to function and close. There are very many amazing people who have contributed so much to the success of the VH in past years. It's PEOPLE who make a community by coming forward to offer voluntary support and make a difference so please get in touch if you can offer a little help, the committee only meets every other month and communicates mostly by email.

Sending special good wishes to all the heroes in this village including the editor of this magazine making life so much better in Reach for all of us to enjoy.

**Sue Elliott**

742268

---

## Dennis Millard Bequest

---



We wanted to let the village know of the huge generosity of Dennis Millard in leaving a very generous bequest to the Village Hall in his will.

Many of you will remember Dennis as the quiet, slightly stooped, gentleman who used to walk and cycle around the village, or you perhaps saw him waiting for the bus. He always had a cheery smile and a wave as he walked or cycled past. Maybe older residents recall him in his younger days. He clearly had an affection for the village hall and had once been a regular user.

The committee will consider the best way to use this money and will update the village in due course.

**Andrew Trump**

Treasurer

---

## Cricket Report

---



**Sunday 19 May** Histon 174 (Ben Cooke 4-23) beat Reach 141 (Chris Bodger 54) by 33 runs.

**Wednesday 29 May** Cam Kerala 141-8 beat Reach 119-8 by 22 runs.

**Sunday 2 June** Reach 176-9 (Dylan Hardy 54) beat Isleham 106 all out (Conor Benton 3-6) by 70 runs.

**Wednesday 5 June** Reach 150-6 (Nick Huckle 75, Ewen Cameron 53) by 7 runs.

**Sunday 9 June** Cam Ceylon 210-8 beat Reach 198 all out (Ewen Cameron 97) by 12 runs.

One of these days I'm going to put one finger in a vice before a cricket match and snap it in half. Why? Because obviously it is the secret to being able to bat. Last week, in our match against Isleham, Ewen Cameron scored 1 run. This week, he tried to take a catch in the deep and broke one of his fingers. The result? When it came to our turn to bat he scored 97 – very nearly his second century for the club. Perhaps more evidence needs to be gathered before anyone can definitively say that batting with broken fingers improves one's ability to score runs, but early results certainly seem to point in that direction. Ewen's 97 didn't mean we won the match, by the way. This was the most exciting end to a match since our near-miss at the last's midweek cup final. In spite of some stubborn resistance at the end (which is all I do with a bat, really) we perished 12 runs short.

**Wednesday 12 June** Thurlow 150-5 (Ben Cooke 3-27) beat Reach 134-9 by 16 runs.

**Sunday 16 June** Reach 220-2 (Simon Harrington 51, Tim Davies 50) beat Theo Clark XI 116 all out by 104 runs.

How lovely to see a team that is the image of the team we used to be: half of them hadn't played cricket for years, if at all. They had to borrow our kit and one or two had a bowling action that made Murali Muralitharan's look straight out of a textbook. We did win, but that wasn't the point.

**Wednesday 19 June** Thurlow 124-2 beat Reach 123-6 (Chris Summerskill 47) by 8 wickets.

The midsummer sun was beginning to draw long shadows as Reach took to the crease in reply to Thurlow's 124-2, with a question hanging on the lips of everyone present (ie both teams and a dog-walker or two): could Reach emulate their success from 2023 and make it to the final of the midweek cup? No.

**Sunday 23 June** Reach 107-6 beat Bottisham and Lode Development XI (102-3) by 5 runs.

Bottisham and Lode brought a youthful development XI, so we thought we would field our own development XI. First in was Bryan Pearson (68, which is his age and sadly not his score) who knocked up 5 runs before being caught. Bryan is not yet the finished article yet, but I'm sure his confidence will grow over the coming years.

**Sunday 30 June** Reach won mini tournament at Milton.

Okay, we put our strongest batsmen up against one team which was fielding an 8 year old. But let's brush over that. We won our first ever piece of silverware, in a tournament of 5-over thrashes. We will not look back from this.



**Wednesday 17 July** Reach 184-4 (Tim Davies 79) beat Saffron Walden 70 all out by 114 runs.

Some upcoming home matches:

Sun 4 Aug	vs Linton	12.00
Wed 7 Aug	vs Thurlow	18.30
Sun 11 Aug	vs Swaffhams	13.00
Sun 25/Mon 26 Aug	vs Extras	13.00
our first-ever two day 'test match'!		
Sun 8 Sept	vs Stansfield	13.00
Sun 15 Sept	vs Cambridge NCI	13.00
Sun 22 Sept	vs Cherry Hinton	12.30

**Ross Clark**

---

## Bottisham and Burwell Photographic Club

---



Our last meeting of the summer term was held on 7 May with '15 Minutes of Fame' when members were invited to talk about their most successful images of the season. We were treated to viewing digital images and prints that had gained awards as well as learning about projects that members had been working on, especially infrared photography that is becoming more and more popular in club competitions.

Our Club Outing this year on 9 June was a visit to the City of Norwich. Members who attend on the day are invited to enter digital images for 'The Metcalfe Trophy' a competition which will be judged by David Steel DPAGB of Cambridge and held on 5 November 2024.

We return to meetings after the summer recess on 10 September 2024. This will be our Welcome Evening, a social celebration of last season when Cups & Trophies will be presented to the award winners of our annual Print & PDI competitions.

Our programme continues during the Autumn and some are listed below:

- |              |   |
|--------------|---|
| September 17 | An Evening with Nature Photographer Andy Sands, St Albans (Zoom meeting)  |
| October 1    | Composition Masterclass by Richard Cobby ARPS CPAGB. An in-depth evening dealing with every aspect of photographic composition. |
| October 8    | Projected Digital Image League Competition No. 1.   |
| October 15   | 'Computational Photography – How Our Smartphones Are Beating the Big Cameras' by Gary Friedman (Zoom meeting)                   |
| October 29   | 'From Concrete to the Abstract' by Ann Miles FRPS, Cambridge.   |

Meetings are held Tuesday evening from 7.30 pm to 9.30 pm at Swaffham Prior Village Hall (except the third Tuesday in the month an online Zoom meeting) and new members are always welcome.

Visitors can attend a lecture for a small entrance fee of £4.00, which includes refreshments. Our annual subscriptions are £55.00 for Adults, £30.00 for Students, plus a weekly attendance fee of £1, which includes refreshments.

If you would like to join us for our new season we would love to see you. A copy of our programme for 2024/2025 can be obtained from our Secretary, Debra Bennett, at [secretary.bandbpc@gmail.com](mailto:secretary.bandbpc@gmail.com).

**Daphne Hanson DPAGB HonPAGB**

Chairman

---

## Reach Riders

---



Finally, the weather seems to be improving!

Our arena is being well maintained, with plans for the committee members to do a full assessment next week to future proof our wonderful facility.

Lessons continue with Lucy Tuck and are well supported.

Membership continues to grow and we love to welcome new members.

We are really keen to know what members would like to see happening at the arena, socially or anything horse related.

In the meantime, we are going to have a social evening at the pub on Wednesday the 28th August. A chance for members or anyone who lives locally who may be interested in coming along. The food van Steak and Honour will be there so come and have a bite to eat, a few drinks and a fun evening !

**Sue Cameron**



---

## Elm Tree Cottage, Culgaith

---

### Location

Elm Tree Cottage is in the charming fellside village of Culgaith, in the heart of the Eden Valley and at the foot of the Pennine mountain range. It is ideally situated for touring the Lake District, with Ullswater being only 11 miles away, as well as Hadrian's Wall, Teesdale and the Scottish Borders.

Just north, you will find the famous Gretna Green and from there, it is over the border into Scotland's Southern Uplands of Dumfries and Galloway, the land of Robert Burns and views across the Solway Firth.



### Accommodation

Elm Tree Cottage is a detached house with a double garage plus a small garden area at the front and sides and paved courtyard at the back.

There are three bedrooms, all upstairs, one with a king size double, one with twin beds and the third with two bunk beds. The bathroom is upstairs and there is a hallway, lounge, kitchen, utility room and an additional toilet downstairs. We have a local caretaker who looks after the property for us.

### Local Attractions and Facilities



Culgaith has a lovely pub, The Black Swan, which serves local ales and food.

Close by is Center Parcs, Whinfell Forest where day tickets can be purchased.

The famous Settle to Carlisle railway runs through the village and can be caught at Appleby Station (the most scenic section is Appleby to Settle).

The whole tapestry is further enhanced by the sight of the fast-flowing River Eden which is famous for its stocks of salmon and wild brown trout and the rolling hills provide an unlimited number of walks for the novice to the dedicated fell walker.

A week's stay, at any time in the year, will cost just £350.

**To book and for further information**, please contact me, **Hilary Marsh**.

[www.elmtreecottage.co.uk](http://www.elmtreecottage.co.uk)

01638 741296

[bookings@themeadowhouse.co.uk](mailto:bookings@themeadowhouse.co.uk)

---

## Rosanna's Ramblings

---

A dog walk usually proves to be a fruitful source of inspiration for my Ramblings – while I'm rambling, as it were. Just as well, really, seeing as walking around the droves and paths and byways around Reach is such a frequent thing. It never gets boring, though, because as Charles often says, "You can't step into the same river twice". The route on a tracking app might often look the same. But the time of day changes. The season changes. The weather changes. The light changes. And even if the photo archive on my phone tells me that I did the exact same walk on the same day exactly a year ago, the variations would still be startlingly wide.

I'm used to observing nature closely and how the seasons are developing. This year has really been strange so far, hasn't it? That unremarkable but long winter, a spring burst that seemed to do everything all at once within a fortnight, then the cold wet non-summer. And now, well already still back in June, the flowers in the garden seem to have gone over in a way I wouldn't expect until August, the rowan berries turned red way too early and our apples scarcely did their 'June drop'. It looks like the orchard, at any rate, is going to have a bumper crop. But our tomatoes, both outside and in the greenhouse, have set very few fruit and that makes me worried about the lack of pollinating insects around. Has it just been too wet?



So all of that was rumbling around in my mind this afternoon while I was walking Milo. After a morning which started out promisingly enough for our editor's 'prompt email' to start with 'Beautiful day!', it had started to rain – again. The paths through the wood quickly turned treacherously slippery and I was glad of the tall stick I've carried since my dog-caused knee injury eighteen months ago. I started musing on those wood paths, wondering as I wandered how long it would take for them to become so deeply embedded in the landscape that no-one could imagine our local world without them. I suspect that moment is pretty much nearly here. Even in the nine years since I first came to the village, the wood has transformed utterly. Then it was almost like in immature 'pretend wood', now it's grown up enough to have fallen trees creating clearings. Bosky is the word we often use about it, once everything is in full leaf. It's lovely.

So back to my musings. I've always had a big soft spot for Green Lanes. I had a book all about them, with beautiful photographs, in my early 20s when I was still a suburban Londoner who had only ever lived there, or in Cambridge for my student years. There was something so redolent of the combined history and geography of a place about the lanes, some of them deeply sunken into holloways after hundreds of years of human and equine traffic; some of them tracking along routes established in pre-history; all of them evidence of long-lasting human use, to transport, and connect, and orient in their world.





For me, walking on a drove or track always makes me think of those people whose feet made them in the first place, or whose driven cattle widened them. When Charles tells me that the tiny lane, Little Lane, between one of the bends in Great Lane and the Drying Green near White Roses was once the bigger lane because it was on the direct route between Barston Drove and what was then the green of West Reach close to the Hythe ... well, my mind does one of those temporal concertina flips, and I picture a very different local world.



I particularly love the Back Road (as it appears on the 1803 Enclosure map) which goes from Great Lane to run along the back of the Fair Green gardens. It never fails to make me feel I'm walking through a time portal. Has the Honesty always grown so well there? Did Victorian villagers also have to stop their dogs from running too fast down the hill towards the road, for fear of fast-moving vehicles? Of course, Reach being Reach, it's just as likely that it's Hilary's horse and trap (forgive me, Hilary, if that's not what you call it!) going past as it is to be a Tesco delivery van. Mind you, Milo always barks furiously when the inexplicable combination of horse, people at a strange height and rattling wheels goes past the side of the house (he doesn't like big things that rattle ... tractors are all right, tractors with trailers aren't) – so he'd probably run back up Back Road if he saw it at the bottom of the hill!



I wouldn't know any of these things if I weren't married to Charles. But I would notice the byways and paths and speculate. It's a delight to explore villages, or even parts of towns on foot, that are familiar because you drive through them regularly. You can turn down a previously unnoticed alleyway (as we southerners call them – Charles the Lancashire lad calls them ginnels, when I lived in Northamptonshire they called them jitties). I particularly enjoy spotting unusual vegetation clinging to cracks in walls, or the miniature landscapes made by mosses with their flowering heads waving in a small way in a breeze which must feel like a gale to them). There was a strange, large plant a few months ago emerging from the base of a wall in Little Lane. I identified it with my Plantnet app on my phone as Indian Pokeweed, a garden escape species originally from eastern Asia.



*Phytolacca acinosa Roxb.*

Indian poke

Phytolaccaceae

That's quite a long journey to end up in Reach. I wish I knew its story.

**Rosanna Moseley Gore**



---

## Nature in Reach

---

I begin this article in very British fashion by commenting on the weather. The UK's average temperature so far this summer is 12.8°C, which is 1°C below normal. Met Office data suggests it could even fall below the cool summer temperatures experienced in 2012. The Met



Office is also predicting the wettest summer since the Titanic sank. The impact on our wildlife is hard to gauge. Conditions early in the period appeared to have held back the arrival and nesting of some, but not all, summer bird migrants. However, most species seem to have caught up and, anecdotally, some songbirds seem to have prospered.

One likely beneficiary of the wet weather has been hemlock. A tall, upright native biennial, hemlock can be readily identified by its mousy smell and smooth purple spotted stems. Hemlock prefers damp conditions and can grow in huge colonies on waste ground, riverbanks, ditches and crucially in our case, along roadside verges. It produces umbrella-like clusters of white flowers in June and July.

In recent years hemlock has colonised Little Fen Drove (despite the heroic efforts of Andrew Trump), Headlake Drove and parts of Tubney Fen and there are pockets of it elsewhere in the parish. I strongly suspect that this year's growing conditions will accelerate the advance.



Hemlock features heavily in literature and history - it was used to execute the Greek philosopher, Socrates. The toxins in hemlock are alkaloids which cause muscular paralysis and can lead to respiratory failure. A tiny amount of hemlock can prove fatal to a human or to livestock but usually only when ingested. Nonetheless care is needed when handling this plant. I was surprised, therefore, to discover that hemlock was a component of dwale, a medieval anaesthetic.

Aside from the risk to human and livestock health, hemlock challenges efforts to improve biodiversity in the village. In favourable conditions, especially moist, fertile soil, it and other native species (nettles, cow parsley and hogweed) will crowd out the more delicate calcareous flower species we are trying to encourage on village verges. Reinstating regular cutting could be one means of controlling these competitive species. I have asked the Highways department if it is reviewing its policy not to mow the verges of our area until late summer (i.e. after the hemlock has set seed) in light of the plant's advances. I await a response.

The hemlock issue demonstrates there is plenty of need and scope for active intervention to enhance local biodiversity. The National Trust has plans to undertake landscaping on Tubney Fen and on land it has retained at the 24 Acres to retain winter rain or spring water and thereby increase the attractiveness of both areas for bird species including the turtle dove. I will report about this work in a future edition of the magazine.

Over the last couple of years the village itself has undertaken small scale interventions - the PC changed the mowing regime at the cemetery two years ago, the Friends of Reach Wood scarified and sowed an area of the meadow at Reach Wood with chalk grassland species in October 2021.



Also, a small group, led by Steve Boreham, resowed areas of the banks of the Catchwater Drain opposite the Hythe with a wildflower mix in 2023. Steve has recently looked at the impact of these interventions and found the following;

- a modest but steady increase in plant diversity at the cemetery. Steve recorded 42 species there in June 2024 including bee orchids. When he began the study two years ago there were 37 plant species present.



*Viper's bugloss in Reach Wood*

- a rather more notable increase in plant species numbers at Reach Wood Meadow from around 42 species before intervention to 62 species in July 2024 including a pyramidal orchid before it was eaten, probably by a muntjac.



*Pyramidal orchid*

- a less successful outcome on the banks of the Catchwater Drain where only nine of the 35 species in the seed mix seem to have established. Oxeye Daisy and Knapweed are the two most visible successes. The sowing used seed donated by the Internal Drainage Board in response to concerns about its decision to place sediment dredged from the catch water on the banks. The relative lack of success of the sowing may be down to the wet spring and summer.

- This and the presence of nutrients in the sediment, enabled existing rank species to crowd out most of our seeds. Steve points out that soil from the catch water banks spread along Straight Drove as part as part of the IDB's activities has created a wildflower rich strip which wasn't there before.

In terms on individual sightings:

6 June: Joss Goodchild hears lesser whitethroat and linnet singing in the fields by Tubney Fen. The following day she reports a beautiful calls from a song thrush and blackcap. She also notes the frequent calls of chiffchaffs in Reach Wood.

8 and 11 June: Joss reports a pair of grey partridge and a brood of chicks in the long grass of her field. The parents were very protective of their brood, rushing at her feet making alarmed, rasping 'kut' 'kut' cries. Sadly, three days later, no chicks were left.

9 June: Joss reports hares in the fields surrounding Reach whilst Ron remarks on the brief presence of bee orchids in flower in Reach Wood before they are browsed off by deer.

16 June: I watch an early morning marsh harrier quartering Tubney Fen.

18 June: Ron and Penny Greenhill report the presence of 10 swifts circling above their garden. This is a better return than they had expected earlier in the year when cool conditions were slowing activity. Their population of three breeding pairs is still a little lower than in previous summers but there is promise elsewhere in the village. The Holmwoods have a couple of pairs of swifts nesting in their roof space. Marcus and Fern have swifts nesting in purpose-made swift boxes under their eaves. The Clutton-Brocks are hosting 15 breeding pairs at White Roses including 13 pairs in a purpose-built swift hotel. For anybody considering installing a swift box, to assist a bird that perhaps typifies a Reach summer, Dafila recommends consulting Action For Swifts <https://www.actionforswifts.com/>

Unfortunately, another iconic summer visitor appears to be fairing less well. Joss reports that the swallows that nest in her stables were predated for the first time in fifteen years. She feels that swallow numbers are noticeably down this year although swallows did successfully fledge at Hillary Fielding's stableyard.

18 June: Penny also reports that a greenfinch pair is sitting on a second brood in their pear tree. Local sightings and soundings suggest that greenfinch numbers are slowly recovering from a severe outbreak of trichomonosis, a parasite sometimes associated with bird feeders, which led to a population crash in the 1990s. My experience suggests that chaffinches, which were similarly afflicted, have not bounced back.



I would be most interested to hear other villagers' observations on greenfinch and chaffinch numbers in the village.

20 June: A blackcap sings volubly in the scrub on the Hythe. Its fruity, flutey warbling song is sometimes mistaken for that of a nightingale.

20 June: Ron reports two fox cubs playing quite openly in the field behind the village hall. He also mentions recent sightings of a buzzard carrying prey from the fen into the village. On one occasion it was carrying a leveret or small rabbit and on another occasion it was harried by a couple of gulls. Ron suspects the buzzard is nesting on the eastern fringes of the village.

23 June: In the late evening David Parr hears, but cannot see, a pair of tawny owls, confirmed by the excellent Merlin app, calling from a tree in Little Back Lane.

25 June: Late on a drizzly evening Rosie Almond captures video of an otter on the northeast bank of Burwell Lode between the cock up bridges. Rosie's sighting is just outside our parish but this marvellous image offers the best evidence yet that otters are a regular, if not permanent, presence in our locality. Rosie sees an otter again at the same place and time on 12 July.



5 July: Ron relays two independent sightings of a white-tailed eagle perched on a post in the field opposite Snakehall Farm. Although this would be a first for the village, the sightings are plausible, mentioning the same field identification points (size, yellow beak and claws, pale head). I contacted the Roy Dennis Wildlife Foundation <https://www.roydennis.org/category/sea-eagle/isle-of-wight-sea-eagles/> to see if this bird was one of their tracked releases from the Isle of Wight. It wasn't, but the Foundation commented that it regularly receives reports of vagrant white-tailed eagles from Europe.

5 July: Joss notes that kestrels had successfully raised a brood in Great Lane. She also remarks on the abundance of species in the large hedge fringing the Aves family farm. These include pied wagtails, wrens, crows, magpies, robins, goldfinch, greenfinch, bats and rabbits.

6 July: Joss observes ragwort laden with cinnabar moth caterpillars.

7 July: I spot large numbers of marbled white butterflies circling scabious and knapweed on the path between Reach Wood and the allotments.

12 and 13 July: Joss reports a short-eared owl perched on the fence posts of her field. On the same day she sees an immature buzzard perched on a field post and that evening and on several subsequent evenings, she sees a barn owl at Reach Wood.

14 July: Joss reports a large hedgehog in her garden. There is a nightly hedgehog presence in our garden, too, after several years' absence.

15 July: There are frequent sightings of red kites over the village. On the same day David rescues a kingfisher that has flown into his conservatory (see inside front cover picture).

17 July: Ron reports that a kingfisher perches on his conservatory roof and fishes in his garden pond. The sighting of kingfishers in the centre of the village is unusual and to have two sightings within two days is unlikely to be coincidental. I see two hares boxing in the early morning sunshine on the tarmac at the crossroads of Little Fen Drove and Headlake Drove before they make off at speed up Great Drove.

17 July: Joss hears the 'weirdest bird call' from beyond the ash tree at her field. It sounds like a creature in pain and is identified on her Merlin bird call app as a grey catbird. Joss, who managed to record the call, is dubious of the identification but it is not impossible. There are regular if not frequent sightings of this vagrant from North America.

18 July: Hillary spots a garden warbler in her yard adjacent to Tubney Fen.

**Nick Acklam**



---

## Wicken Fen

---



(C) National Trust James Beck

We've been enjoying celebrating Wicken Fen's 125<sup>th</sup> anniversary this year. New for this year, we have *summer evening opening* on Thursdays (until the end of August), with the visitor centre, gift shop and boardwalk open until 8pm. Also, until the end of August, the *pizza van* is serving delicious wood fired pizzas and cold drinks on Thursdays (5-8pm), Fridays (5.30-8pm), Saturdays (12.30-3pm; 5.30-8pm) and Sundays (12.30-3pm).

Now it's summer and the Fen is at its best, with lots of flowers and insect life. The *Summer Nature Trail* is the longest route around the Sedge Fen. It has been given time to rest to allow the delicate peat soils to recover and is open until the end of September. It's a special part of the reserve, full of lush green foliage and fen plants and flowers. This circular route is approximately 2¼ miles long and is a beautiful place to look out for marsh orchids, dragonflies and butterflies.

Until the 1<sup>st</sup> of September, there is a new *Dragons & Damselfly family trail* around the boardwalk, in celebration of Wicken Fen becoming a British Dragonfly Society hotspot site. The trail is filled with games, quizzes and activities to learn more about the dragonflies and damselflies found on the Fen, for the cost of £1 per trail sheet, which includes a gift to take home (usual admission to Sedge Fen applies).

*Boat trips* and *cycle hire* are in full swing and are great ways to explore the reserve with friends and family. We have recently added two recumbent trikes to the fleet. If you'd like more information about what we offer, our Visitor Centre team can always help; we're available from 10am to 5pm daily on 01353 720274.

We have a variety of family-friendly events throughout August and September (all of which can be booked onto via the Wicken Fen website):

- *Pond Dipping*, delve into the watery world to find out what is living beneath the surface: 9<sup>th</sup>, 12<sup>th</sup> and 21<sup>st</sup> August.
- *Evening Boat Ride*, trips at 16.30 and 18.00 on 8<sup>th</sup> and 22<sup>nd</sup> August.
- *Bug Hunters*, family fun for those who like to discover creepy crawlies and catch crickets: 2<sup>nd</sup> and 5<sup>th</sup> August.
- *Butterfly Fun: Discover and Do*, marvel at their beautiful bodies under the microscope plus cut, stick and stencil some amazing butterfly-themed crafts: 7<sup>th</sup>, 16<sup>th</sup> and 19<sup>th</sup> August.
- *Minibeast Superheroes*, sensory challenges and active play ideas, perfect for those with lots of energy, includes a make-and-take medal: 14<sup>th</sup>, 23<sup>rd</sup> and 28<sup>th</sup> August.



(C) National Trust Simon Stirrup

For the latest reserve information, please visit our website: [www.nationaltrust.org.uk/wicken-fen](http://www.nationaltrust.org.uk/wicken-fen).

Details of our events can be found on our website at <https://www.nationaltrust.org.uk/wicken-fen-nature-reserve/whats-on>

### Ajay Tegala

Senior Communications and Marketing Officer





---

## Anglesey Abbey

---



*Anglesey Abbey house in the summer (C) National Trust Andrew Butler*

Head over to Anglesey Abbey for an activity-packed **Summer of Play** – every day until 1 September. If you're looking for a great day out for the whole family, look no further! We're talking crazy golf, bubble shows, crafts, facepainting, archery and more.

Sponsored by Starling Bank, we've got five interactive play zones for children to enjoy throughout the summer holidays: a disco den, games area, book nook, creative corner and a trundle track for toddlers on East Lawn. To add to the fun, there will be a story time session every Monday, bubble shows or craft activities every Wednesday and a lunchtime disco each Friday throughout the summer holidays. These events are all free for visitors to enjoy; normal admission to the grounds applies.

A couple of our events are ticketed: brand new for the first time this summer, have a go at our 9-hole crazy golf course from 27 July – 11 August and see if you can get a hole in one! £5 per person, scorecards included. Please head to our website for more details and to book your place. Then take aim on 20 and 27 August and enjoy some archery sessions in the Arboretum, £4 per person, no need to pre-book.

And if you haven't booked your tickets yet, we are down to the final few for the outdoor theatre performance of Hamlet by The Lord Chamberlain's Men on Saturday 17 August at Anglesey Abbey.

Throughout the summer and into September, come and try out our **new Garden Office Café**, located by the house and looking onto the stunning Rose Garden. Having opened on 19 July, this has been a particularly popular spot for visitors to pick up a hot drink and a bite to eat before carrying on with their walk or taking a moment to sit down and relax in the new outdoor seating area in the courtyard.



*"Summer of Play" is sponsored by Starling Bank (C) National Trust David Kirkham*

To plan your visit or book tickets, please head to: [www.nationaltrust.org.uk/anglesey-abbey](http://www.nationaltrust.org.uk/anglesey-abbey)

We look forward to welcoming you to Anglesey Abbey and wish you all a wonderful summer!

**Issy Vetoshkina**

Senior Communications and Marketing Officer





---

## Burwell Surgery Patient Participation Group

---

### Mental Health Support

As part of its work, the PPG seeks to better understand how the Surgery is helping to support some of the key health challenges facing the community. For this edition the Surgery has answered some questions on support for mental health.

#### What is the incidence of different mental health conditions in Burwell?

Over 10% of the Surgery's patients are registered with depression and we have a small number of patients (less than 1%) registered with dementia, and a similar number registered as having experienced at least one episode of psychosis. However, there are many other conditions such as ADHD, neurodiversity (Autism) and eating disorders that have all increased significantly over the last few years as well as patients with what are termed "personality disorders".

#### What pathways and services are there to support patients presenting with mental health issues?

All mental health conditions can have very considerable impacts on those affected and their families. We take mental health issues very seriously as a practice and try to offer a similar level of support as if you were presenting with a physical health condition. Often both physical and mental health issues are closely linked, and it is hard to help one without the other!

Our advice is:

1. **If you have concerns about your mental health or someone else's, a good starting point is to discuss it with someone you trust**, perhaps a friend or family initially, or the class teacher at school or a work colleague. You are welcome to discuss it with us if this seems the best approach available to you. We are lucky to be living in a very caring community and there are many people who really want to help others who are going through a difficult time.
2. **If there is an acute mental health crisis then please call 111 option 2.** This is available 24/7 and is appropriate if there are active concerns of suicide, significant self-harm or a sense that without immediate action there would be a significant escalation of risk. The mental health crisis team will take your details and call back within 4 hours. They have an on-call psychiatrist, mental health nurses and a 'sanctuary' to diffuse an acute mental health emergency (often a much better place to be than a busy A&E department).

3. **At the Surgery we will help you take a step back and try to take a holistic view of the situation.** Where relevant, is there more that can be done to address triggers for the problem or any general healthier behaviours that could help? For example, reducing alcohol and increasing exercise. We refer more patients to the Newmarket Leisure Centre for exercise support for mental rather than physical health. There are some great resources at "How Are You" <https://haveastcambs.co.uk/>
4. **We have an excellent 'Social Prescriber' and other support workers who may be able to help with some of the social triggers** – for example accessing benefits or using appropriate resources in the village such as the Day Centre or craft or activity groups.
5. **We can recommend a range of self-help resources if appropriate.** For example the local mental health team have produced a series of self-help videos <https://www.cpft.nhs.uk/self-help-videos/> for depression and anxiety and there are also very good national self-help guides at <https://www.nhs.uk/mental-health/self-help/guides-tools-and-activities/five-steps-to-mental-wellbeing/>
6. **In some cases, more formal talking therapy might be appropriate.** There are a number of local services available for self-referral, including Cognitive Behavioural Therapy on the NHS for adults <https://www.cpft.nhs.uk/self-refer-here/> and Centre 33 for young people up to 25 <https://centre33.org.uk/help/how-to-get-counselling/>
7. We may recommend starting medication in some cases at the practice and offer you support from the practice.
8. Sometimes we will refer you for specialist advice and support from our specialist mental health services. This will depend on the condition and the severity.

**For more information:** A longer version of this article is at <https://www.theburwellsurgery.co.uk/patient-group/> and includes more links to other organisations and resources. **Next meeting of the PPG:** 6.30pm, Tuesday 15<sup>th</sup> October at Burwell Day Centre. If you would be interested in finding out more about the PPG please contact [admin.burwellsurgery@nhs.net](mailto:admin.burwellsurgery@nhs.net)



---

## Food Focus

---

### Mozzarella and burrata salads

I made this Waitrose recipe card as a side dish to roast chicken without the burrata and it was delicious, so I then decided to make it again but with the burrata as a starter – (stupidly forgot to add the mint) and found the burrata underwhelming, the whole dish too strongly flavoured with lemon and very disappointing!



However, I'm putting it in here as if you make it as instructed – serve the beans and lettuce warm and possibly substitute the burrata for mozzarella – you'll have a delicious dish. Unfortunately, I think by the time this goes to print you'll be using frozen rather than fresh broad beans and on this one occasion I can boast that we had them straight from the garden – which may well have contributed to the deliciousness. Having very recently been disappointed by burrata I think I'm going to stick to mozzarella, but maybe you have better sources or methods than me. I did let it get to room temperature before serving though so I do feel I gave it its best chance.

### Minted bean and burrata salad



Creamy burrata, sweet broad beans and fresh mint make for a brilliant summertime combo. Serve with crusty bread to mop up the delicious juices.

- 150g Burrata
- 250g podded baby broad beans (fresh or frozen)
- 2 Little Gem Lettuce
- 2 tbsp extra virgin olive oil
- 1 unwaxed lemon, zest of all, juice of ½
- 1 handful leaves Mint shredded

- 1) Take the burrata out of the fridge and drain 20 minutes before serving. Meanwhile, bring a large saucepan of salted water to the boil and add the broad beans. Simmer for 3-4 minutes (or 5-6 minutes if frozen), then drain and rinse under cold water. Double pod the beans if liked, then set aside.
- 2) Heat a frying pan over a medium heat. Cut the little gem into quarters and brush lightly with a little of the oil. Season and add to the pan, then fry the wedges on each cut side until golden and a little wilted (about 2 minutes); set aside. Meanwhile, mix the remaining oil with ½ of the lemon zest and all of the juice; season.
- 3) Arrange the burrata, broad beans and little gem on a serving plate or divide between individual plates, if you prefer. Spoon over the dressing and season. Scatter with the shredded mint and the remaining lemon zest.

### Caprese salad

You don't really need a recipe for this, but I thought I would put it in to encourage you to buy some of the wonderful tomatoes on offer at Snakehall Farm over the summer. Add avocado to make a more substantial salad (I don't think it counts as Caprese salad then though).

- 8 ripe plum tomatoes, sliced
- 2 balls of mozzarella sliced
- handful of basil leaves
- 2 tbsp extra virgin olive oil
- 2 tbsp balsamic vinegar

Arrange the slices of tomato and mozzarella on a platter, alternating between slices of each and sprinkle over the basil leaves. Season generously with salt and black pepper, then drizzle over the olive oil and vinegar.

### Grilled peach & burrata salad with pistachio pesto

I haven't tried this one, but thought it sounded rather delicious and amazingly we sometimes get a few edible peaches on our peach tree, so I might try it. Apparently it's one of Samantha Evans & Shauna Guinn's favourite dishes (if you know who they are) in the summer when they need a showstopper of a salad to take centre stage (another Waitrose recipe).

- 4 peaches (or nectarines)
- 1 courgette, cut into 2cm slices diagonally (always useful to find a use for these)
- 2 tbsp extra virgin olive oil

- 110g pack wild rocket salad
- 150g pack burrata
- Smoked paprika, to serve (optional)
- ½ unwaxed lemon zest

For the pistachio pesto

- 1 clove/s garlic, peeled
- 75g unsalted pistachio kernels
- ½ x 25g pack fresh basil
- 75g extra virgin olive oil
- 50g Parmigiano Reggiano, finely grated
- ½ unwaxed lemon, juice
- ¼ tsp ground black pepper

- 1) Fire up your barbecue so that it's ready for direct grilling (cooking directly over the heat). Start by making the pesto. We prefer to use a pestle and mortar so the consistency is a little rustic with a toothsome texture but you can use a mini blender if you prefer. It's definitely quicker – just make sure you use the pulse setting. Add the ingredients in stages: start by crushing the garlic until it forms a paste, then add all but 1 tbsp of the pistachios (set these aside to scatter over the salad later). Grind the pistachios to a paste, then add the basil leaves and repeat. Finish by mixing through the olive oil, Parmigiano Reggiano, lemon juice (zest it first to set aside for the salad) and black pepper. Mix thoroughly and season, adjusting the ingredients as necessary; set aside.
- 2) Cut the peaches or nectarines in half and remove the stones from the centre using a small paring knife (this can be tricky – don't worry if they look a little rustic by the time you've removed the stones). Lightly brush the cut side of the peaches and both sides of the courgette with 1 tbsp oil and barbecue for 2-3 minutes on each side. When you have some attractive grill marks, set aside to cool while you finish the salad.
- 3) Arrange the salad leaves on a large platter. Make a space in the middle for the star of the show: the burrata (their words not mine). We like to dust a little smoked paprika on the top of the cheese at this stage. Now cut your peaches or nectarines in half again, so they're quartered, and arrange around the burrata, along with the courgette. Top with generous spoonfuls of the pesto, including a dollop on the burrata. Finish by scattering over the reserved pistachios and lemon zest, then drizzling with the remaining 1 tbsp oil.

**Catherine Gibson**

---

## Letter from the Vicarage

---

**“Summertime, and the living is easy...”** For all of us, the summer months bring longer days and warmer weather (we hope!) and perhaps some time away from home. For some, however, summer holidays bring additional challenges, with children off school, many clubs and activities taking a break and already over-stretched resources.



To help support families, we will be extending our usual Friday morning Refresh Café, to welcome families with children of all ages to our Fun Fridays, 10am – 12.00pm at St Mary's, from 19<sup>th</sup> July 19<sup>th</sup> to 23<sup>rd</sup> August, with outdoor and indoor activities, alongside our Refresh Café toddler area. Refreshments will be available, including a simple lunch.

Pop-Up Pantry is held on Fridays 2.00 – 3.00pm at Burwell & District Day Centre, supported by St Mary's, with short life fresh food items, cupboard basics, toiletries and hygiene products, as available. We would be delighted to receive any surplus garden or allotment produce over the summer and are also hoping to provide school holiday food packs for families. Anyone in financial need is welcome to access support, without a voucher, to help them get back on their feet. Ely Foodbank has also been operating alongside, with a weekly Foodbank Centre and monthly Citizens Advice support. Check on social media for the latest updates or get in touch if you would like help or can offer donations.

Our shop and drop-in on the Causeway, CentrePeace, is also open to browse the books and jigsaws, have a drink and chat. To find out more about what's going on at St Mary's or St Etheldreda's in Reach, please see our Facebook pages and website. Most weeks, we aim to livestream our weekly 10am Sunday service on Facebook. Café Church is usually the first Sunday of the month, beginning with refreshments, time to chat and themed activities, followed by a short service. Next dates are 4<sup>th</sup> August and 1<sup>st</sup> September and then our Reach harvest service on Sunday 29<sup>th</sup> September at 10.00am.

Please get in touch if you would like more information about these or any of our events or services, including weddings, christenings and baby thanksgivings, or if you would value an opportunity to chat.



**Burwell Food Support Group**  
**Pop-up Pantry & Ely Foodbank**  
*working together*  
*to support our local community*  
**at Burwell Day Centre**  
**Fridays 2.00 - 3.00pm**  
**and Wednesdays as advertised**

**Pop-up Pantry** is working towards reducing waste and offers short life food and more as is available.

Donations towards the Pantry are gratefully received and can be dropped off at the Day Centre.

A voluntary contribution of £2 is helpful towards running costs.

**Ely Foodbank** provides food for 3 days and can help with issues such as benefit changes, low incomes and more.

**Citizen Advice** join the team on 1<sup>st</sup> Friday of month.

If you require help from the Foodbank

please ring 01353 468626

or email [info@ely.foodbank.org.uk](mailto:info@ely.foodbank.org.uk)

Burwell Food Support Group links individuals and groups working to support those in need in our community, and includes Burwell Help Group, Open Arms, St Mary's Church, Burwell Baptist Church, Burwell & District Day Centre, Burwell Co-op



**All Age Service**  
**at St Etheldreda's, Reach**  
**Sunday 29<sup>th</sup> September 10.00am**  
**Followed by refreshments**

You're invited to bring harvest gifts for Ely Foodbank or produce for local distribution  
 You can also make cash or card donations towards aid projects

**Revd Canon Dr Eleanor Williams**  
 Vicar of Burwell with Reach  
 01638 741262  
[vicar@stmarysburwell.org.uk](mailto:vicar@stmarysburwell.org.uk)  
[www.stmarysburwell.org.uk](http://www.stmarysburwell.org.uk)  
[www.facebook.com/stmarysburwell/](https://www.facebook.com/stmarysburwell/)

## CentrePeace



38a The Causeway, Burwell

Selling second hand books and jigsaws and a range of greetings cards

### Opening Times

<b>Tuesday</b>	<b>10.00am—12.30pm</b>
<b>Wednesday</b>	<b>2.00pm—4.00pm</b>
<b>Thursday</b>	<b>10.00am—12.30pm</b>
	<b>1.00pm—3.00pm</b>
<b>Friday</b>	<b>10.00am—12.30pm</b>
<b>Saturday</b>	<b>10.00am—12.30pm</b>

Centre Peace continues to be popular with those who come to buy books, deliver books and drop in for coffee. The books are just £1, or 50p for children's books, and the coffee and conversation are free! Do drop in and see us. Our volunteers will make you very welcome.

## Burwell and Reach Car Scheme

The Burwell and Reach Car Scheme offers those with travel restrictions or mobility issues a drive to the doctor, dentist, hospital, optician, hairdresser, shopping or just a visit to a friend, at a cost of 30p per mile. Just leave a message on 07399 154913 with your requirements and someone will get back to you. Or contact me, Pam King in Reach on 07484 852889. If anyone in Reach would like to volunteer to drive we are always grateful for extra people. Just leave a message on the answerphone 07399 154913.

## PRIOR FEN CHAPEL

*"The Little Chapel in the Fen"*

**Harvest Festival Service**  
**Sunday 6<sup>th</sup> October - 3pm**

**Traditional harvest service and hymns**  
**Produce welcome**

Find us at CB7 5YJ, between Upware and Swaffham Prior.

Be early to guarantee a seat

**For more information contact Trish:**  
**07979 868676**

---

## Burwell Museum

---



We've seen a few changes at the Museum this season. To start with, we have changed our opening days from Thursdays and Sundays to Saturdays and Sundays, (plus Bank Holidays). We opened on Thursdays mainly to allow schools to visit during term times, but with transport costs going up so much and school budgets being cut, few schools can afford to visit us now, (although we can still accommodate visits from schools by special arrangement). The new arrangement seems to be going quite well, though we won't know how well until we come to the end of the season.

We have an exciting new acquisition to the Museum: an Austin 7 delivery van from Swaffham Prior which has been registered to the same owner since it was first purchased in the 1930s.



It will join Paul Upton's delivery van from Swaffham Bulbeck and the Austin saloon car we already have from the same era.

We have also acquired a home-built observatory which is in the process of being restored on site. It was built by a very talented villager in his back garden and gifted to us when he died. Cambridge University have inspected it and advised us where best to locate it on site and a group of our volunteers are repairing and rebuilding it. We are hoping to have it fully working again by next season so we can do some stargazing.

We are however struggling with our personnel. We are entirely run by volunteers and for one reason or another we have lost several of them over the last few months. So we are looking for front of house people, to welcome visitors as they come into the Museum and take their entrance fees; and for people to serve in our tearoom. Just a couple of hours at a weekend once or twice a month would be a great help. We would also like to add to our Board of Trustees: if you are interested in doing any of these things please get in touch with me.

Burwell museum is a fantastic place - a tribute to our founders who realised just how much had changed within their lifetime and how much would be lost if nothing was done to record it! How many of the children of today would know how to use an old fashioned telephone, let alone recognise the telephone exchange (with working telephones) that we have in the Museum?

Come and see!

**Brenda Wilson** Chair of Trustees

[bgdtwilson1@btinternet.com](mailto:bgdtwilson1@btinternet.com)

---

## Reach Fair Final Accounts

---



The Final Accounts show a pleasing improvement compared to the Draft version contained in the last issue of the magazine . . .

	FINAL	DRAFT
<b>Commercial Stalls Income</b>	£10,201	£9,841
<b>Village Activities</b>	£12,109	£12,096
<b>Village Activities Costs</b>	£5,891	£5,991
<b>Other Costs</b>	£9,223	£9,714
<b>TOTAL Income</b>	£22,309	£21,936
<b>TOTAL Costs</b>	£15,114	£15,705
<b>TOTAL Gross Profit</b>	£7,196	£6,231
<b>Donations to groups for services</b>	£1,775	£1,775
<b>To Grant Fund</b>	<b><u>£5,421</u></b>	<b><u>£4,456</u></b>



---

## Tales from a Reach Garden

---

This year's wet and gloomy spring has become a cool and wet summer but the downpours were very much enjoyed by our peas, new potatoes, strawberries and raspberries, which provided bumper crops in June and early July. We appreciated not having to water the garden too. Considering that most of the raspberries for sale in shops come from Scotland, one could almost say that our weather was Scottish this summer but thankfully, without the midges. However, the garden has suffered from the effects of other pests.



*"Kelvedon wonder" peas in June*

Thanks to the wet weather, the slugs and snails particularly relished chomping on our young climbing bean, cucumber and courgette plants in early June. The plants had been protected from predation by pigeons, rabbits and deer, but not from the lowly slugs which demolished half of our courgettes, climbing beans and cucumbers. These were not newly-hatched seedlings, but young plants grown in pots indoors then planted outside after a period of "hardening off" i.e. getting used to the cooler and windier conditions outdoors.



*Some of our climbing beans before the slugs attacked*

We are being told to avoid using slug pellets because although they are an effective control, they are detrimental to those animals which prey on slugs and snails. Even birds may eat the pellets out of curiosity, so they have to be used very carefully. The other options for slug control are also fraught with problems. Recent trials carried out by the Royal Horticultural Society show that slugs and snails are not deterred by crushed eggshells, copper tape, bark mulch, sharp grit or wool pellets; in fact, they will happily slime their way over those obstacles to snack on their preferred plants.

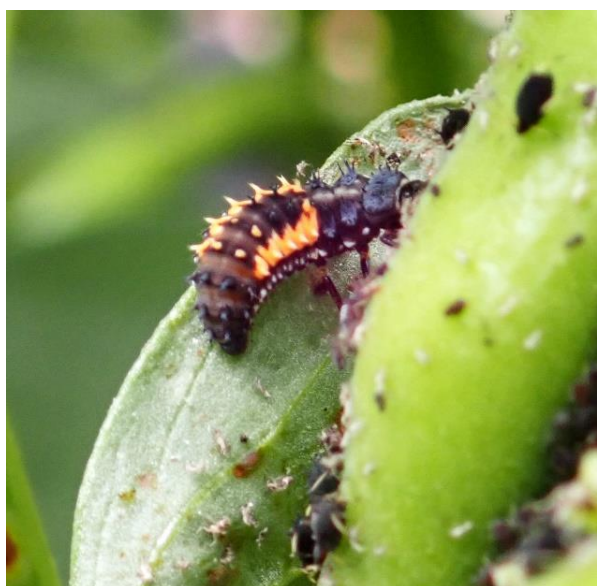
Another option is biological control of slugs for example, "Nemaslug" which is best applied to growing plots in spring and autumn. These biological controls use microscopic nematodes or eelworms which are ingested by the slugs that become infected with bacteria which kill them. This is a fairly indiscriminate way of killing slugs as not all of them are pests; some species are beneficial and feed on decaying matter helping to create compost. In my experience, Nemaslug isn't cheap and has to be reapplied more frequently than slug pellets to be effective. In addition, slug pellets are easy to see so they can be topped up when they've disappeared, but nematodes aren't visible to the naked eye and one has to wait for the tell-tale signs of damaged foliage. It's a particular problem for brassicas (cabbages, kale, broccoli etc.) which have a long growing season.

Traps, such as a pot of beer sat in the soil allowing slugs to fall in (drowning them), or an upturned hollowed half of a grapefruit or an orange (where they can hide during the day) are also effective, but you have to check the traps every day and then decide what to do with the slugs and snails once you've found them. One of the best deterrents is diluted coffee, when applied as a drench around the plants that need protection, or to spray on slugs. Even instant coffee will work, because it is the caffeine that either deters them, so decaffeinated coffee won't work, moreover sparkling caffeinated drinks like colas and Red Bull are best avoided because they are more acidic.



However, if it rains heavily, the drench would need to be reapplied. A mulch of coffee grounds placed around the base of vulnerable plants can help, provided they have a high enough caffeine content. Alternatively, the more intrepid among us could hunt the slugs and snails at night, which would certainly remove the larger and more obvious molluscs.

We also had a huge infestation of blackfly and whitefly on the broad bean plants in late June. I've learnt over the years to pinch out the tops and wait for the predators to arrive. Sure enough, lots of different type of ladybirds, lacewings, hover flies and grasshoppers arrived to feast on the bounty, or at least to lay eggs. Alas the heavy rains seemed to wash a lot of them away as well as some of the aphids, with the exception of ladybird larvae which were probably the most tenacious and voracious eaters of aphids. In spite of this we did have a good crop of broad beans.



*Harlequin ladybird larva feeding on aphids*

Compared with previous years, this summer's cooler-than-normal weather has slowed down the growth of many of our summer vegetables, such as courgettes, climbing beans, cucumbers and tomatoes. (that is, those plants which survived the slugs), plus our pumpkin plants have been very slow to get started once planted in the ground outdoors. Nevertheless, due to the recent spell of warmer weather we are starting to pick courgettes and beans. The pumpkin plants have also put on a growth spurt and are starting to put out flowers. Let's hope this warmer spell of weather continues - fingers crossed!

**Danuta Gibson**



---

## Bob Newman and Sons

---

### Bob Newman & Sons

*Piano Tuner*

Experts in all aspects of piano tuning,  
restoration and repair work



Please contact us to discuss your requirements

Mobile: 07736 411066 (Bob)

07786 988175 (Matt)

Email: [bob@bobnewmanandsons.co.uk](mailto:bob@bobnewmanandsons.co.uk)

Web: [bobnewmanandsons.co.uk](http://bobnewmanandsons.co.uk)  
(online booking for tunings available)

Hi, my name is Matt Newman and I live on the Green in Reach. As some of you will know I am a part-time piano tuner with my Dad – and I asked David to put an ad in Within Reach (Bob Newman & Sons) and he has very kindly invited me to write a few words about what we do.

I've been helping my Dad on and off for some time - he's now semi-retired and wanting to do a bit less understandably! I grew up with a lot of pianos on the dining room table and newly glued piano hammers drying on the washing line, so as you can imagine, I've come across most makes and styles over the years.

As well as tuning pianos we also repair and rebuild them. It's a bit of a family business as my brother restores pianos at 1066 in Fulbourn.

Very happy to talk to anyone who would like to get their piano sounding healthy again!

**Matt Newman**

---

## Know Your Parish Council

---

A message from the Chair, Ed Hall . . . .

*I would like to thank all the villagers who responded to the Parish Council's plea for new members. With the sudden job change of Charlotte Cane (now our new local MP), we were going to be unable to run the Parish Council with only those from the village. However, we had a fantastic response from across Reach with offers of help. I am delighted to announce the following list of councillors for the Reach Parish Council.*

Your Parish Councillors are:

<b>Edward Hall</b>	Chair
<b>Vacancy</b>	Vice Chair
<b>Nick Acklam</b>	Councillor
<b>Hilary Fielding</b>	Councillor
<b>Rowan Foster-Marian</b>	Councillor
<b>Catherine Gibson</b>	Councillor
<b>Tim Quilter</b>	Councillor
<b>Vacancy</b>	Councillor

The vacancy can be filled at the next Parish Council meeting on **September 24<sup>th</sup>**. Please contact Susan Bailey if you are interested in being co-opted onto the Parish Council.

Also:

<b>Charlotte Cane</b>	District Councillor
<b>John Trapp</b>	District Councillor
<b>Joshua Schumann</b>	County Councillor

Meetings normally take place in the **Village Hall** on the first **Tuesday** of each month. They will in future start at **7.30pm** (note new timing) and all Reach villagers are welcome to attend. The next meeting will take place on Tuesday 24<sup>th</sup> September.

Your Clerk is **Susan Bailey**  
29 Great Lane Reach CB25 0JF 01638 743794  
[clerk@reachparishcouncil.org](mailto:clerk@reachparishcouncil.org)

---

## Know Your District Councillors

---

The Council unanimously agreed a motion, proposed by Cllr Chika Akinwale, recognising the essential role of play in child development. The motion also highlighted the importance of creating opportunities for outdoor play that can be accessed by all children, including those with mobility disabilities, such as wheelchair users.

The Council will now carry out an independent audit of all 27 playgrounds it maintains, which provide a range of facilities for toddlers, juniors and youths.

It will also offer Parish Councils the chance to have their playgrounds audited.

Once complete, the Council will develop an inclusive Playground Strategy which looks at what can be achieved in the short, medium and long term, explore possible funding opportunities and create a toolkit to help deliver improvements which will be made when the existing equipment needs replacing.

The Council has also agreed to work closely with its planning department to encourage Inclusive Playgrounds into the planning and approval processes for new developments. It will also explore the feasibility of developing a planning policy, through the new Local Plan, to include a requirement to deliver Inclusive Playgrounds.

Not much significant business was transacted this month, due to the General Election. As you might be aware, Charlotte Cane was elected as our MP, but she will continue to be a District Councillor. We don't know yet how Charlotte will be able to juggle the two workloads, but the surgeries will continue and one of us shall be coming to the Parish Councils. John Trapp may have to take a greater share of the work. Charlotte in her MP's report will outline how she will be making herself available to her constituents once arrangements are in place.

At Operational Services Committee these issues or actions arose:

- There was a small annual overspend
- There was a large underspend on capital, due to purchases held in abeyance
- The reformation and streamlining of the planning pre-application process to make it more realistic and efficient
- To note that the performance of ECSS in collecting waste and street cleansing had improved
- To note the interim report of the working group on waste management and to anticipate the completion of the report for the next committee meeting

At Finance & Assets Committee these issues or actions arose:

- The considerable reserves that the Council has and the current high interest rate has generated a significant capital gain of almost 1.3m
- There was an underspend of almost 0.7m on other budget lines, mostly because the spending was deferred or not used (e.g. Strategic Housing)
- That there is a significant capital underspend, some of it due to slippage of expenditure.
- The Climate and Nature Strategy 2024-28 and Climate and Nature Monitoring Report and Action Plan 2024 was presented, and accepted although there were significant adverse comments made.

- The report from the Bus, Cycling and Walking working group was presented; this contained proposals for cycle ways that could be created were there to be funds for doing so.

There won't be a surgery in August, but we shall be having one in September. You are, of course, welcome to contact us via email or telephone.

**Cllrs Charlotte Cane**

07976 607512 [charlotte.cane@eastcambs.gov.uk](mailto:charlotte.cane@eastcambs.gov.uk)  
and

**John Trapp**

01223 812120 [john.trapp@eastcambs.gov.uk](mailto:john.trapp@eastcambs.gov.uk)

---

## Our MP's Report

---



*Charlotte on the Members Terrace of the Houses of Parliament*

Thank you for electing me as your Member of Parliament – it is an amazing honour to represent the constituency of Ely and East Cambridgeshire. I look forward to working with you and to representing our beautiful area at Westminster.

As I write this, I have been your MP for one week and it's been busy! My first meeting was on Friday afternoon, about 10 hours after my election was announced. After a busy weekend, I packed my bags and headed to London on Sunday evening.

Monday morning, I headed to my first in-person meeting and in the afternoon I entered Parliament and was given my pass and met my 'buddy'.

Each new MP (there are about 330 of us) has a member of staff assigned to us who showed us round and has been on-hand since to answer questions.

My buddy showed me the Members' cloakroom, where we really do have a pink ribbon with which to hang our swords, as well as a coat hanger for more prosaic attire! We then went to get my IT equipment and have various briefings on finances, security, standards etc. She showed me around parliament, but I still get lost all the time and am grateful to the staff who set me back in the right direction. Even the floor levels are confusing – Parliament has a ground floor, a principal floor and then first and second floors.

Tuesday was largely training sessions, with some time to use the hot desking to start reading and answering emails. We were told it will be a month or two yet before we get an office, meanwhile we have a locker and hot desk space.

On Wednesday, we had our first session in the Chamber – to elect the Speaker. A great deal of pomp and ceremony, but also a chance for all the Party leaders to make short speeches to congratulate the Speaker. Then they started swearing in the MPs, starting with the cabinet moving through long-standing MPs until eventually reaching the new MPs. I took my oath on Thursday afternoon. That was when it finally sunk in as I introduced myself as Charlotte Cane representing Ely and East Cambridgeshire and felt the weight of responsibility. I will do my best to represent you all.

Parliament didn't sit on Friday, so I made my way home to Reach. I recorded a television discussion and then had a zoom meeting about Sunnica Solar Farm, only to find out about an hour later that planning permission had been given by the Secretary of State. On Saturday I was able to get to the Ely Farmers' Market, for my bread, cheese, samosas, cherries and strawberries. Then I went to the World Pea shooting Championships in Witcham. I am certainly not competition standard, but I did at least manage to hit the practice target a few times.

Over the next few weeks I need to learn my way around and recruit a team of staff so that I can properly respond to all your queries and concerns. But I do, at least have an email address so you can contact me – [charlotte.cane.mp@parliament.uk](mailto:charlotte.cane.mp@parliament.uk)

### Charlotte Cane MP





---

## Parish Council Meeting Minutes

---

### Minutes of Reach Parish Council meeting held in the Village Hall on Tuesday 4<sup>th</sup> June 2024 at 7pm

#### Attendance

Charlotte Cane	Vice Chair	Present	Susan Bailey	Clerk	Present
Catherine Gibson	Councillor	Present	Charlotte Cane	District Councillor	Present
Edward Hall	Chair	Present	Joshua Schumann	County Councillor	Not Present

**Apologies for absence** – there were none.

**Forum for members of the public** – there were none.

**Declaration of Interests** – there were none.

#### 1. Planning - None

#### 2. District Councillor Report

A short report, as most announcements have been put on hold for the general election period.

Annual Council re-elected Councillor Mark Goldsack as Chair and Cllr David Brown as Vice Chair.

The motion calling for prevention of abuse and intimidation of public officials and the motion supporting accessible play areas were both approved unanimously. The motion calling for the two-child cap on benefits to be scrapped went to a 3 way split vote with 11 votes in favour, 12 against and 3 abstentions.

Charlotte is on the Finance & Assets Committee & Licensing Committee & John is on Finance & Assets, Planning & Licensing Committees. Charlotte is also on the Overview & Scrutiny Committee for the Combined Authority. Although we welcome the appointment of an Independent member of the Audit Committee, the Liberal Democrats have not nominated anyone to this Committee because it still does not follow the Chartered Institute of Public Finance and Accountancy guidelines – for example it has allowed the immediate past Chair of the Finance & Assets Committee to be not only a member of the Audit Committee, but to Chair that Committee.

There were 2 questions from the public, one raising concerns about homelessness in the District & the other raising concerns about street sweeping – these were very similar concerns raised by Parish Councils & residents locally. In answer to a question about the bus improvements, including the proposed new bus route here, Cllr Anna Bailey reiterated that she did not support the increase in the Mayor's precept to pay for these services & she said that buses were not the answer to East Cambridgeshire's transport problems.

The Council is running a campaign to support people suffering from domestic abuse. Their staff and Councillors have been trained so that they can help anyone who 'asks for Ani' find the help and support which they need. Unfortunately, there tends to be an uplift in domestic violence during major football tournaments.

If you are aware of anyone who might need help, please direct them to the Police and the Council – there is help available for them.

The Council prosecuted a woman from Wardy Hill for illegal dog breeding. She was given a 6 month suspended prison sentence & required to pay some of the Council's costs. She is also banned from keeping animals for 10 years & has to do various other activities as set out by the judge. She was found to have 44 dogs in terrible conditions, even without drinking water. The dogs were malnourished, had fleas & ear mites. One was so bad, he collapsed at the vet & had to have emergency treatment. The Council had to call on a lot of vets, dog groomers, re-homing organisations & individuals to provide immediate care. All the dogs are now recovering well and have been re-homed – including 2 who were taken in by Council staff.

Anyone who is looking to purchase a puppy is advised to carry out appropriate checks to ensure that the breeder is licensed. The public register for East Cambridgeshire is available on the council's website.

#### 3. County Councillor Report

##### MONTHLY REPORT JUNE 2024

A brief report this month, given that we are now in a General Election period & a number of council meetings have been moved to dates after 4 July.

#### CHILDREN & YOUNG PEOPLE

Ofsted report published - Cambridgeshire County Council's children's services have been graded overall as 'requires improvement' according to Ofsted—no change from the previous inspection. The report follows a recent inspection. Inspectors said: "Senior leaders have now made an accurate self-assessment & have created strong foundations to drive practice improvement." However, inspectors said that although since 2019 there had been no overall improvement in services for vulnerable children, they acknowledged that "evidence of concrete and significant improvement in recent months had taken place." They also added: "This improvement was initiated by a new chief executive & assisted by the appropriate decision to decouple shared leadership & service arrangements from Peterborough" and that "there has been significant political & corporate investment & commitment to the improvement of outcomes for children in Cambridgeshire." The Council acknowledges that there is still work to be done.

Full Ofsted report at <https://files.ofsted.gov.uk/v1/file/50247204>

#### COMMUNITIES, SOCIAL MOBILITY & INCLUSION (COSMIC)

Quality of Life survey - The County Council has launched its second annual quality of life survey for Cambridgeshire. 5,500 residents, 1,100 from each district, have been selected for a telephone survey as a representative sample. However, any resident can complete the survey online until Friday 19 July.

<https://www.smartsurvey.co.uk/s/CambsQoL2024/>

#### ENVIRONMENT & GREEN INVESTMENT

Wisbech incinerator - Before Parliament was dissolved at the end of May, the Government lifted its temporary ban on the Environment Agency issuing operating licences for new incinerators. The Environment Agency issued an operating licence for the Wisbech incinerator the same day. We continue to wait to hear what is happening to Fenland District Council's application for judicial review of the Government's decision to grant planning permission.

Enviro incinerator at Woodhurst - The Planning Inspector's report on the appeal against the Council's refusal of this application has been sent to the Secretary of State for consideration. A decision is expected to be issued on or before 20 August 2024.

Deposit return scheme - Also before Parliament was dissolved, the Department for Environment, Food & Rural Affairs (Defra) confirmed that the Deposit Return Schemes for drinks containers will be introduced in October 2027, two years later than previously advised.

#### FIRE AUTHORITY

New chief fire officer recommended - The Cambridgeshire & Peterborough Fire Authority Appointments Committee is recommending Matthew Warren as the new Chief Fire Officer/Chief Executive Officer for Cambridgeshire Fire & Rescue Service, following the retirement of Chris Strickland.

Matthew is currently Deputy Chief Executive for Cambridgeshire Fire & Rescue Service & has worked for the Service for over twenty years. Matthew joined in 2003 as Head of Finance, before becoming Director of Resources in 2009 & Deputy Chief Executive in 2015. He will be recommended to the full Fire Authority when it meets on Thursday 20 June.

Meanwhile on the Combined Authority - New bus routes & improvements to existing routes are on the way, paid for by the Mayor's Precept. Locally these will include the additional bus from Newmarket to

Addenbrookes & Hills Road, via Reach & Bottisham, & changes to the existing number 11 which will no longer come through Reach.

A demand-responsive travel solution for rural areas across most of East Cambridgeshire is also being worked on. Development will focus on Isleham, Little Downham & wider communities.

I'm delighted that significant moves are being made to improve bus provision locally—despite the Leader of East Cambridgeshire District Council voting against this when the Combined Authority Board was asked to approve the budget.

The routes still need to be procured & individual posters for each route will be released in the summer. The Combined Authority's web page on the bus proposals includes district-by-district explanations of the proposed routes, with maps. There's also a very quick survey to fill in—please do!

<https://cambridgeshirepeterborough-ca.gov.uk/better-buses/>

#### **4. Minutes of previous Meeting**

Approved as correct.

#### **5.1 Reach Grant Fund**

The new Grant fund charity signatories are now confirmed, and the account is open. As agreed **Clerk** will transfer half the funds from the grant fund to the new charity account. The forms then need to be sent to HMRC.

#### **5.2 Finance - Nothing to report**

#### **5.3 Parish Council Members - Nothing to report**



#### 5.4 Play Spaces

The annual inspection had been completed and will be discussed at the July meeting.  
ECDC is offering to audit playground with regard to accessibility & offer grant funding for any work which may be required.

#### 5.5 Rights of Way

A resident had complained about overgrown trees & hedges along byway 5 which runs along the back of Fair Green by Reach Wood. Byways are controlled by Highways at CCC, **Clerk** to report the issue using their website map. The PC will look at their hedgerow alongside byway 5.

Could village residents check their boundaries and make sure all over hanging trees and hedges are cut back along all foot paths, & byways

#### 5.6 24Acres Committee

Giant hogweed had been seen in & around the village. **Councillor Gibson** to contact Nick Acklam regarding Hogweed in the 24Acres.

5.7 Friends Of Reach Wood - Nothing to report.

5.8 A to B1102 Group - Nothing to report.

5.9 Nature Recovery Plan - Nothing to report.

#### 5.10 Hythe Restoration Group

The group had asked for space on the website, which the PC are please to agree to.

There had been damage to a tree on The Hythe, thought to be from a person whilst their boat was moored. Discussion took place regarding the mooring and its lack of mowing to the water's edge deeming it nearly impossible to use at the moment, and increasing the likelihood of boats that do moor using the trees to tie off. It was agreed that the PC must supply a useable facility if the mooring fee was to be continued to be accepted. **Clerk** to arrange for a section of 1m from the waters edge to be mown and a pathway up from this to the top of the bank.

#### 6. Approve Annual Governance Statement

Agreed and signed.

#### 7. Approve the Accountancy statement

Agreed and signed.

#### 8. Approval of exemption certificate

Agreed and signed.

#### 9. The cemetery Tree work

3 quotes had been received of which 1 was accepted. **Clerk** to inform the contractor.

#### 10. Defibrillator check update

Councillor Gibson had checked the defib and registered it with The Circuit – the national defibrillator network. It's also now connected to East of England Ambulance Service and more likely to be used in an emergency.

**Councillor Gibson** to investigate putting in place a servicing contract and training for residents.

#### 11. Date of July Meeting

It was agreed that due to the election the July meeting would be moved to Tuesday 16<sup>th</sup> July.

#### 12. Payments

E.on Next – power on the green	£31.50
CR Contracting – mowing contract	£291.00
Fenland Leisure – Playground inspection	£144.00
Fuse – IT provision	£707.04

The payment to Fuse was delayed as Councillor all had asked for a breakdown of the service which had not yet been received. All other payments **Councillor Hall** to approve online.

## Diary Dates and Bus Timetable

August	Event	Location	Time
Sunday 4	Holy Communion	St Etheldreda's, Reach	8.30am
Tuesday 6	Recycling Day (Brown/Green)		
Tuesday 13	Recycling Day (Blue)		
Tuesday 20	Recycling Day (Brown/Green)		
Wednesday 21	Holy Communion	St Etheldreda's, Reach	10.30am
Tuesday 27	Recycling Day (Blue)		
Wednesday 28	Reach Riders Social Evening	The Dyke's End	Evening

September	Event	Location	Time
Sunday 1	Holy Communion	St Etheldreda's, Reach	8.30am
Tuesday 3	Recycling Day (Brown/Green)		
Sunday 8	Sports Day	Playing Field	1.00pm
Tuesday 10	Recycling Day (Blue)		
Saturday 14	Snakehall Open Day	Snakehall Farm	11.00am-3.00pm
Saturday 14	Macmillan and Maggies Coffee Morning	48 Great Lane	10am-midday
Tuesday 17	Recycling Day (Brown/Green)		
Wednesday 18	Holy Communion	St Etheldreda's, Reach	10.30am
Thursday 19	Village Hall AGM	Village Hall	8.00pm
Tuesday 24	Recycling Day (Blue)		
Tuesday 24	Parish Council Meeting	Village Hall	7.30pm
Sunday 29	Harvest Service	St Etheldreda's, Reach	10.00am



### Service No. 11 - Newmarket to and from Cambridge

Monday to Saturday only	NS	SO	NS	SO												
Newmarket, The Guineas Bus Station	--	--	700	700	820	920	1020	1120	1220	1320	1420	1520	1620	1745		
Newmarket, Academy	--	--	703	703	823	923	1023	1123	1223	1323	1423	1523	1623	1748		
Newmarket, Studland Park Centre	--	--	710	710	830	930	1030	1130	1230	1330	1430	1530	1630	1755		
Burwell, Ness Road	639	649	721	721	841	941	1041	1141	1241	1341	1441	1541	1641	1806		
Burwell, Hawthorn Way	641	651	723	723	843	943	1043	1143	1243	1343	1443	1543	1643	1808		
Reach, Great Lane	653	703	--	--	855	--	1055	--	1255	--	1455	1555	1655	1820		
Swaffham Prior, Cage Hill	658	708	737	737	900	957	1100	1157	1300	1357	1500	1600	1700	1825		
Lode, Fassage Close	--	--	--	--	--	1004	--	1204	--	1404	--	--	--	--		
Stow cum Quy, Station Road	708	718	751	747	910	1012	1110	1212	1310	1412	1510	1610	1710	1835		
Fen Ditton, Cambridge Airport	718	728	804	757	920	1022	1120	1222	1320	1422	1520	1620	1720	1845		
Cambridge, Drummer St Bus Station	732	742	816	811	934	1034	1134	1234	1334	1434	1534	1634	1734	1859		
<b>NS = Not Saturdays, SO = Saturdays Only</b>																
Cambridge, Drummer St Bus Station	650	750	850	950	1050	1150	1250	1350	1450	1550	1715	1815	1915			
Fen Ditton, Cambridge Airport	702	802	902	1002	1102	1202	1302	1402	1502	1602	1727	1827	1927			
Stow cum Quy, Station Road	712	812	912	1012	1112	1212	1312	1412	1512	1612	1737	1837	1937			
Lode, Fassage Close	--	--	920	--	1120	--	1320	--	1520	--	1745	--	--			
Swaffham Prior, Cage Hill	723	823	926	1023	1126	1223	1326	1423	1526	1623	1751	1848	1948			
Reach, Great Lane	728	828	--	1028	--	1228	--	1428	--	1628	--	1853	1953			
Burwell, Hawthorn Way	738	838	938	1038	1138	1238	1338	1438	1538	1638	1803	1903	2003			
Newmarket, Studland Park Centre	752	852	952	1052	1152	1252	1352	1452	1552	1652	1817	1917	2017			
Newmarket, Academy	759	859	959	1059	1159	1259	1359	1459	1559	1659	1824	1924	2024			
Newmarket, The Guineas Bus Station	802	902	1002	1102	1202	1302	1402	1502	1602	1702	1827	1927	2027			



---

## Then and Now *(see facing page for pictures)*

---

For the 1970 Reach Fair week the once important horse sale was revived.

**Chris Patterson**

---

## Contact Information

---

<b>Parish Council – see “Know Your Parish Council”</b>		
<b>Village Hall</b>		
Chair	David Thomas	01638 742676
Finance	Andrew Trump	01638 743335
Bookings	Diana Greer	rvhcb25@gmail.com
Secretary	Sue Elliott	01638 742268
<b>Tents and Village Games Bookings</b>	Claire Halpin-McDonald	01638 743330
<b>Church</b>		
Vicar	Eleanor Williams	01638 741262
Curate (Duty days Wed, Fri and Sun)	Reverend Paula Spalding	07545 868549
Priest in Retirement	Rev David King	01638 742924
Churchwarden	Dr Stephen Martin	01638 611235
<b>Emergencies</b>		
Electricity (Eastern Electric)		0800 783 8838
Police (Emergency)		999
Police (Non-Emergency)		101
Water (Anglian Water)		08457 145145
<b>Doctors, Burwell</b>		
Contact Phone Numbers	01638 741234, out of hours dial 111	
Surgery Hours	Mon to Friday, 8.30am to 6.00pm	
Website (Surgery)	<a href="https://www.theburwellsurgery.co.uk/index.aspx">https://www.theburwellsurgery.co.uk/index.aspx</a>	
Website (Patient Participation Group)	<a href="https://www.theburwellsurgery.co.uk/patient-group">https://www.theburwellsurgery.co.uk/patient-group</a>	